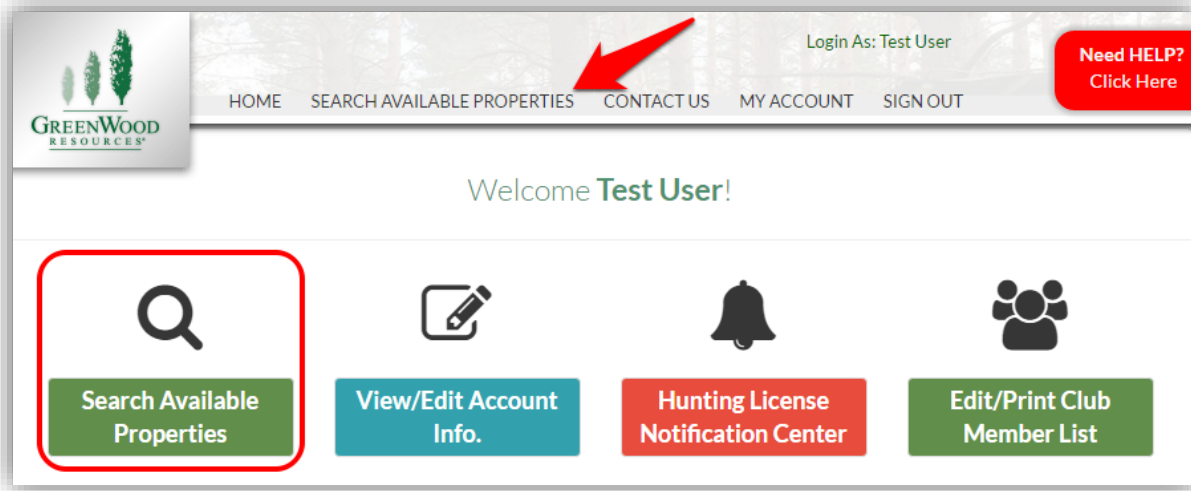


How to Search for Available Properties

The “Search for Available Properties” menu allows you to search for available properties and view maps associated with the property. Each tract of land available for licensing is identified by a Recreational License Unit (RLU) number. Hunting clubs are allowed to bid on and License as many RLUs as they like.



Land available for licensing is listed geographically by state and county. If your preferred county is not listed, then we do not currently have any property available for hunting in that county. Search results can be filtered by using the drop down arrows beside each of the search categories (state, county, RLU, price, and acres). The “Show RLUs” filter provides you with three options in which you can filter your search: show all available RLUs, open for bidding, and License now (no bidding).

A screenshot of the search filter form. It contains several dropdown menus and input fields. The 'Type' dropdown is set to 'Show All Available RLUs'. The 'State', 'County', and 'RLU' dropdowns are all set to 'Select'. The 'Price' section has two input fields for 'Minimum Price' and 'Maximum Price'. The 'Acres' section has two input fields for 'Minimum Acres' and 'Maximum Acres'. A green 'Show Property List' button is located at the bottom of the form.

Show All Available RLUs: Shows all properties available for licensing. This includes properties currently open for bidding and properties that are available for licensing immediately, without bidding.

Open for Bidding: Shows properties that are currently open for bidding. These properties will be open until the bidding period ends. Winning bidders will be notified (via email) at the end of the bidding period. RLU prices listed show the current highest bid value.

License Now (No Bidding): Shows properties that are available for licensing immediately. There is no bidding for these properties. Users can create their Licenses soon after purchasing and will be notified by email about payment amounts and due dates.

After selecting your search criteria and clicking “Show Property List”, you will be automatically directed to the “Property Listing” tab.

Property Listing: Each box on this page contains information about each available RLU that meets your search criteria. This information includes: Location, Number of acres, RLU price, License term dates, the option to Bid or License the RLU, as well as Aerial, Topographical, and Location maps.

Properties found for the search criteria: 13 Sort Results By: RLU No - Low to High

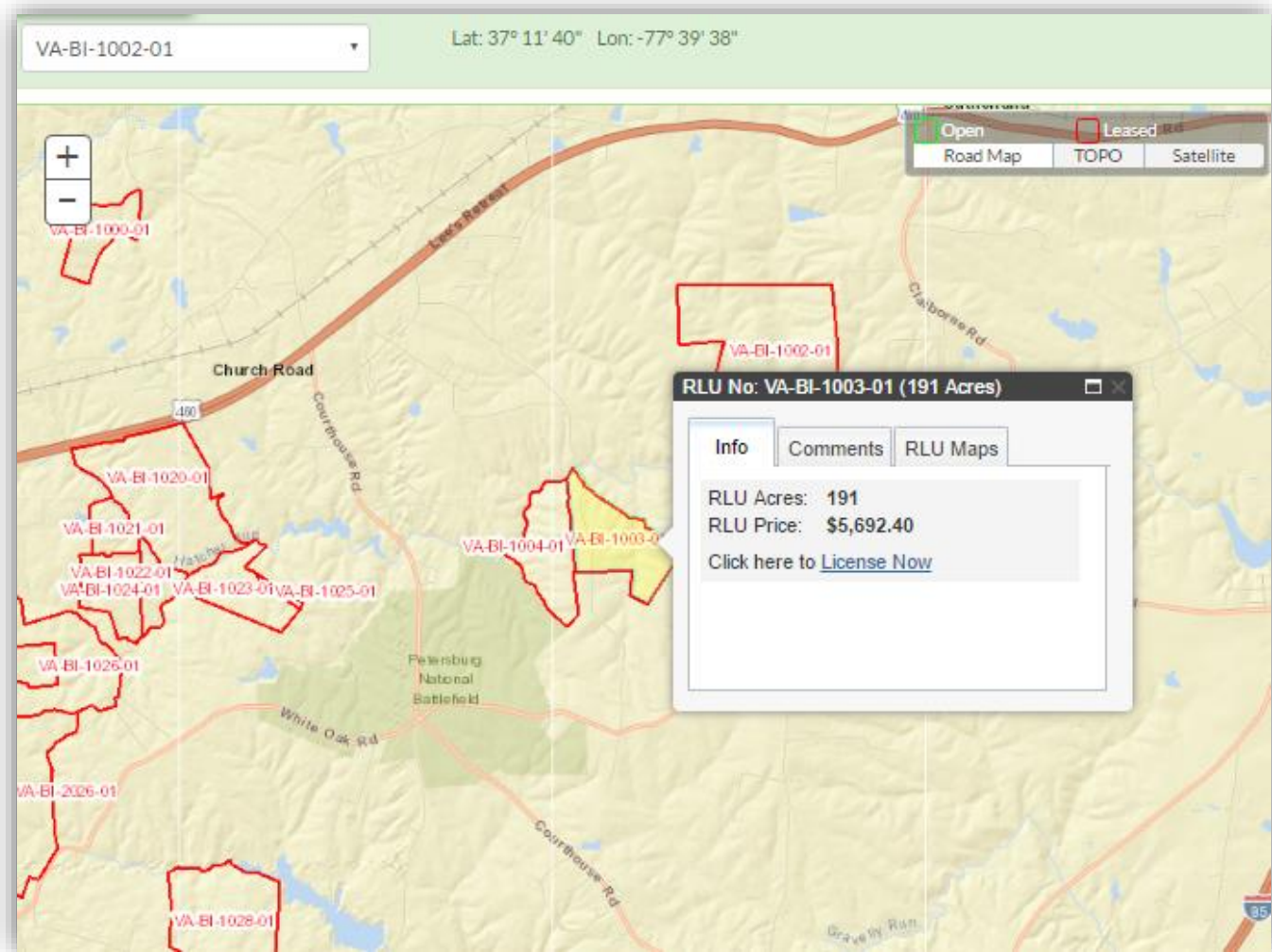
RLU No: GA-GL-7501-01 Acres: 384 Location: Bartow County, GA RLU Price: \$3,840.00 License Term: 03/01/2017 to 02/28/2018 View on Map View Details Aerial TOPO Location Bid on this RLU	RLU No: SC-CA-1107-01 Acres: 332 Location: Abbeville County, SC RLU Price: \$2,656.00 License Term: 03/01/2017 to 02/28/2018 View on Map View Details Aerial TOPO Location License Now
RLU No: GA-GL-7502-01 Acres: 167 Location: Bartow County, GA RLU Price: \$1,670.00 License Term: 03/01/2017 to 02/28/2018 View on Map View Details Aerial TOPO Location Bid on this RLU	RLU No: SC-CA-1128-01 Acres: 353 Location: Abbeville County, SC RLU Price: \$2,824.00 License Term: 03/01/2017 to 02/28/2018 View on Map View Details Aerial TOPO Location License Now

View RLU Details: The RLU Details page shows additional fields not displayed on the Property Listing tab: License Type, Property Comments, and Special Conditions. Bidding and License Now options are also available from this page by clicking the designated button.

RLU No **SC-CA-1107-01**

Acres:	332
Location:	Abbeville County, SC
License Type:	License Now
Bid Start Date:	N/A
Bid End Date:	N/A
License Start Date:	Mar 01, 2017
License End Date:	Feb 28, 2018
Comments:	
RLU Price:	\$2,656.00 License Now
RLU Maps:	Aerial TOPO Location
Special Conditions:	Not Available

View RLU on the Map: Clicking allows you to view RLUs on an interactive map. You are also able to select the RLU you would like to view on the map from the drop-down arrow on the top left portion of your screen.



Zoom In/Out: Zooming in/out can be accomplished by selecting the **+** or **-** on the upper left side of the map.

Pan: Panning can be accomplished by holding down the left mouse button while dragging the mouse pointer to pull the map in any desired direction.

Switch Background Map: The background map can be changed Road Map, TOPO, or Satellite.

